

How to Host a Murder

Work in Progress!!

Inspirations

Jane Eyre - Charlotte Bronte
Wuthering Heights - Emily Bronte
Dracula - Bram Stoker
Frankenstein - Mary Shelley
Sense and Sensibility - Jane Austen
Cold Comfort Farm - Stella Gibbons
Girl Genius - Phil & Kaja Foglio

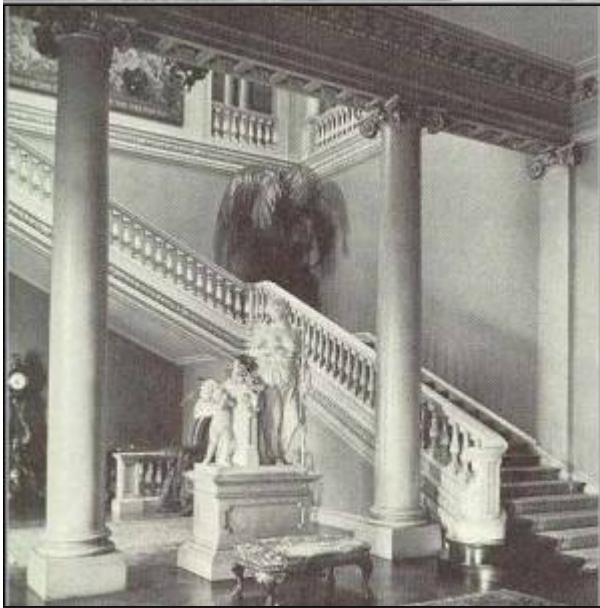
Introduction

The setting is the Farnsworth Manor in Yorkshire in the Autumn of 1886. A country weekend party at the behest of Lady Kaye Carter goes horribly wrong when the the Sunday afternoon following the seance of the previous night, she's found dead.

It's a dark and stormy night, the phone line is down but a servant has been sent to fetch the local constabulary. Can the facts of the murder be discovered before they arrive, or must everyone keep a watchful eye and be denied the chance to leave the manor? What of the rumours of the change in Lady Kaye's will?

Setup

Farnsworth Manor







Characters

- [Evelyn Abercrombie](#) the youthful ward and companion to Lady Kaye. She indulges in perhaps a

bit too much poetry and dancing amongst the wildflowers. She is affianced to Lionel.

- Evelyn sleeps in the Laquer guest room.
- [Lionel "Ducky" Bigglesworth](#), a serious man of middle years with his own manor and grounds.
 - Lionel sleeps in the guest room closest to Aleister's bedroom.
- Then there is the plucky granddaughter, [Ortensia Edwards](#). Unfortunately orphaned, but very keen on not letting that get in the way of setting things to rights.
 - Ortensia sleeps in the Apricot guest room.
- The late Lady's younger brother, [Uncle Victor Farnsworth](#), a nice, avuncular man of academia.
 - Victor has made his abode in the Portico guest suite.
- The youngest child, [Aleister Paul Carter](#) a gentleman of leisure and his older sister-
- [Melancolia Q. Carter](#) the rather morbid.
- [Cain Dolour](#) farmhand and gardener.
 - Cain sleeps in the servant's wing closest to the Dining room.
- [Sister Gwyneth Mallorie](#) from the local Nunnery - the Order of the Bleeding Heart.
 - Sister Gwyneth is staying in the Blue guest room
- and of course [Jeeves](#) the butler.
 - Jeeves sleeps in the servant's wing closest to the East Belvedere.
- [Other Characters](#) in the game

Plot

- [What actually happened](#)
- [The Will](#)
- [Other Clues](#)

Reference Links

[Whitemarsh Hall](#) on which Farnsworth Manor is a derivative work.

VGH

From:

<http://curufea.dreamhosters.com/> - **Curufea's Homepage**

Permanent link:

<http://curufea.dreamhosters.com/doku.php?id=roleplaying:vgh:start>

Last update: **2018/09/17 01:34**

